

NIDUS-W/C



NIDUS-iT is an expansion platform for Robin modules.

Its main feature, consists in monitoring a wide variety of sensors and react to pre-defined criteria.

The **NIDUS-iT** platform, was developed with the objective of integrating functions normally available in various devices.

The definition of criteria is user-friendly in that it is intuitive and of easy configuration.

Environmental monitoring solution and remote control of In/Out.

The device can register data and send all type of alarms.

- Integration of SCADA and CLOUD systems. Various communication protocols available.
- SIMPLE WEB Interface and easy understanding.
- Integration of various external devices via different communication protocols Modbus/RTU, ex: Analyzer/energy counters, water, weather stations, etc. ...
- Stores up to 100'000 records. The records may be individually configured. Intelligent system of transfer of records

Characteristics - Hardware

Hardware – Option 1 (two serial ports)

- ☑ 2X RS232 / RS485 Module
- ☑ Up to 12 external devices over Modbus/RTU
- ☑ Up to 32 RS485 converters TH3 (Modbus/ASCII)

Hardware – Option 2 (ISM or LORA 868Mhz)

- ☑ Up to 32 wireless sensors "airO-Log"

ALL

- ☑ 1 Ethernet Port
- ☑ Server/Client function

Firmware

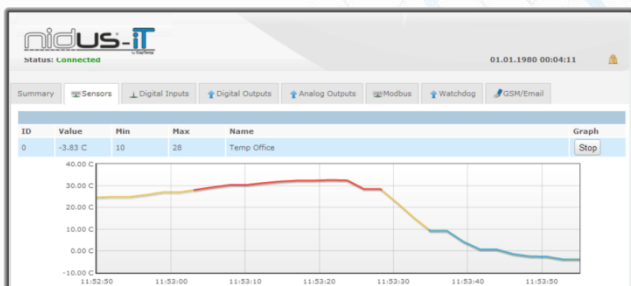
- ☑ Configuration via built-in WEB browser
- ☑ User authentication
- ☑ Remote control of digital outputs
- ☑ Direct and programmed reaction of events
- ☑ Communication Modbus/RTU w/ external devices
- ☑ Easy integration w/ external systems (XML)
- ☑ Thermostatic function
- ☑ Verification of state of devices in network (Watchdog)
- ☑ Graphic visual in real time
- ☑ Individual parameterization of In/Out state (Alarm e records)
- ☑ Internal memory of 100'000 records
- ☑ Protocols: TCP/IP, UDP/IP, SNMP, HTML, XML, PUSH/XML, Modbus (RTU and ASCII), SMS and E-mail

EN 12830:2018
CERTIFIED

APPLICATION:

Where exists the need to monitor, register and control various types of sensors such as:

- **Agriculture:** Greenhouse management, irrigation systems, etc. ..
- **Industry:** Food, Pharmaceutical, Hospital, etc ..
- **Buildings:** Security management, HVAC, Energy management, etc ..



General Settings

Enabled	Yes
Name	Ventilador
Alarm	Disabled
Delay	50 (ms)
Invert	Off
State	ON

User Settings

admin	Name	John
John	SMS Enabled	Yes
Mary	SMS Number	9566666666
User 03	Email Enabled	Yes
	Email	John@captemp.com
User 04	Access Rights	
User 05	Privileges	User
	Password	*****

Analog/Digital Output Reactions

Name	Enabled	Type	Output	Value	Duration
Open Window	Yes	Set Digital	Ventilador	On	600000

SMS and Email Reactions

Name	Enabled	Type	Users	Msg
SMS to John	Yes	Send SMS	John	Alert Temperature